

OPEN

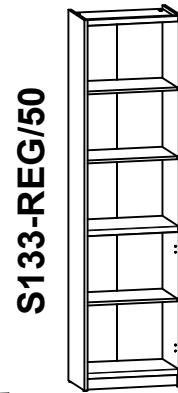
S133-REG/50 ; S133-REG1D/50

A	B	C	D	
1	S133-109	1995	332	1/2; 1/3
2	S133-110	1995	332	1/2; 1/3
3	S133-310	500	326	2/2; 2/3
4	S133-311	498	304	2/2; 2/3
5	S133-403	500	76	2/2; 2/3
6	S133-910	1896	527	1/2; 1/3

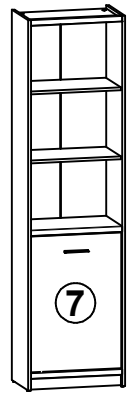


S133-REG1D/50

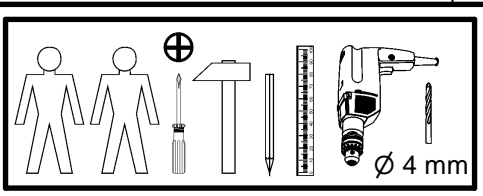
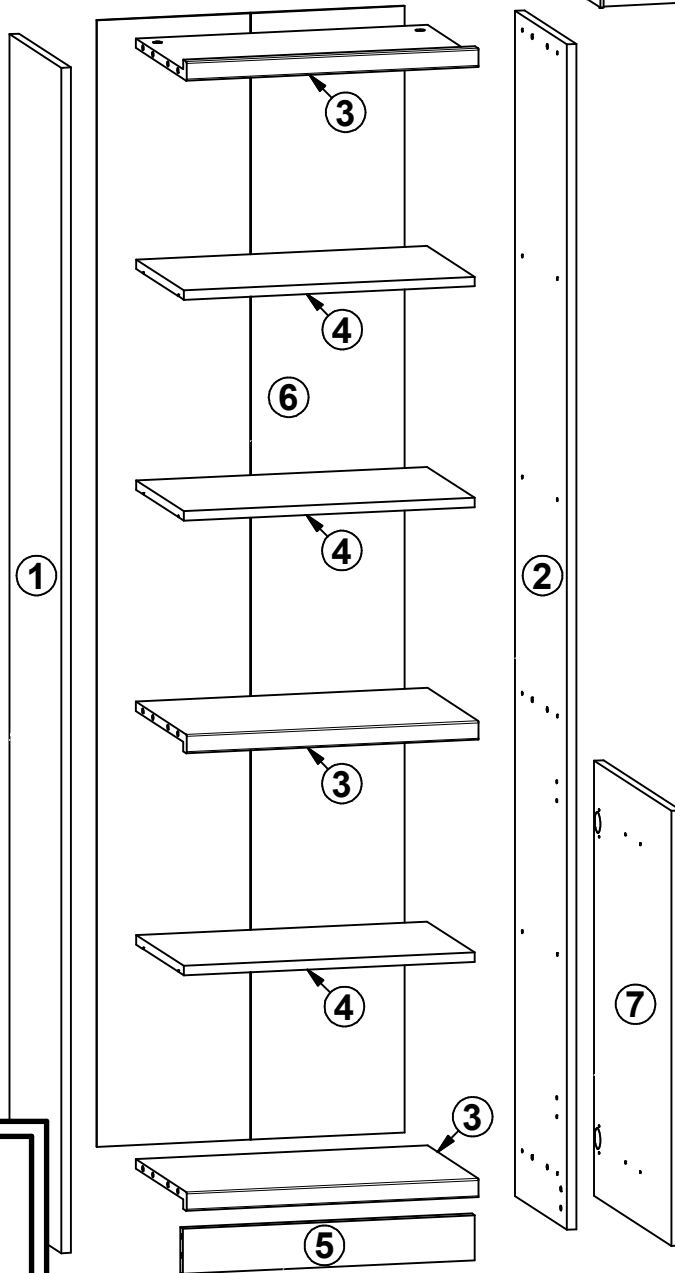
A	B	C	D	
7	S133-007	732	495	3/3



S133-REG/50



S133-REG1D/50



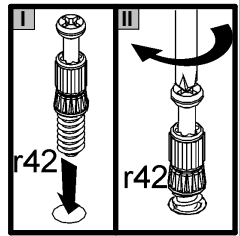
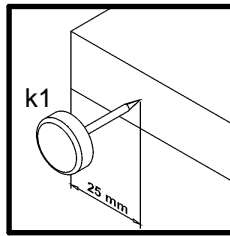
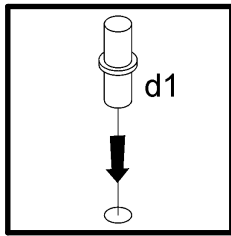
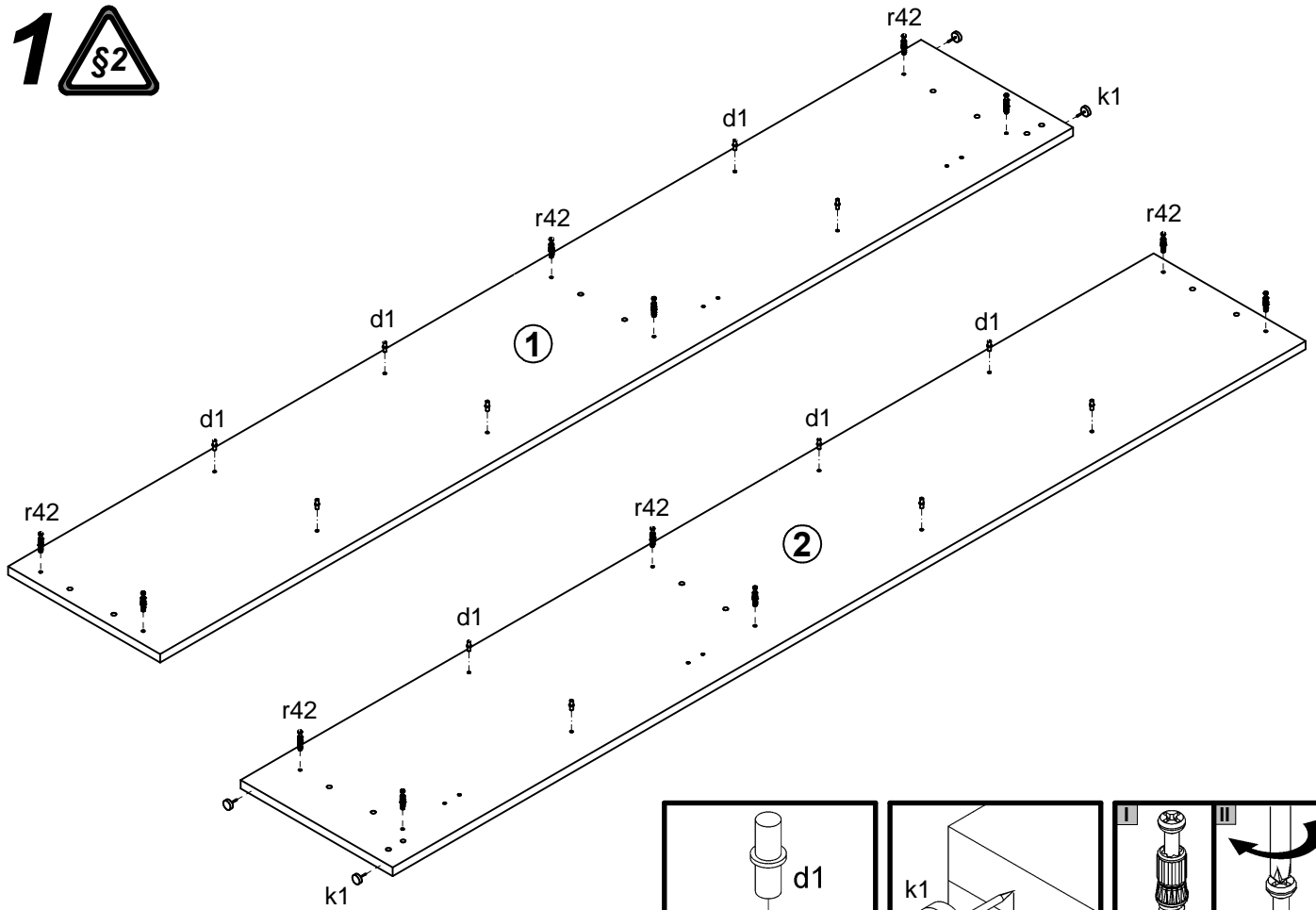
S133-REG/50 ; S133-REG1D/50

12x φ5x17 mm d1	16x φ8x30 mm f1	4x k1	60x l1
12x φ15x12mm #16 r1	12x r42	1x n2611	1x φ3,5x16 mm p38

S133-REG1D/50

2x a43	2x DS b19	1x 126 mm c22317	4x φ6,3x13 mm e2
2x φ2,9x24 mm p50	4x φ3,5x15 mm p51		

1 



2 

